

**Pisa Barbaricina tratto della linea
n.521 Porta a mare – Filettole
TABELLA DEI SOSTEGNI**

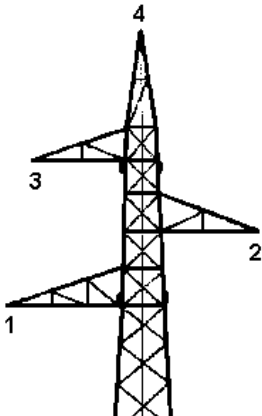
ID	ID_TIPO	CODICE	COORD_X	COORD_Y	COORD_Z	ALTEZZA	ORIENT
100059	144	521-87	1610866	4840270	3.1	19.0	44°
100060	144	521-86	1610989	4840398	4.7	19.1	30°
100061	144	521-85	1611055	4840629	4.9	19.0	16°
100062	145	521-84	1611087	4840741	4.3	23.0	-8°
100063	146	521-83	1611023	4840841	2.7	22.5	-33°
100064	147	521-82	1610961	4840937	3.4	20.7	-36°
100065	148	521-81	1610855	4841068	3.1	20.7	-12°
100066	149	521-76	1610893	4841208	3.2	21.3	8°
100067	150	521-75	1610898	4841417	2.3	21.0	-1°
100068	136	521-74	1610883	4841652	2.4	21.0	-4°
100069	151	521-73	1610871	4841837	2.4	17.5	-4°
100070	151	521-72	1610860	4841999	2.3	18.3	-4°
100071	136	521-71	1610844	4842256	1.9	33.5	-4°

NOTE

1. Doppia terna (*split-phases* senza ottimizzazione) dal sostegno 100059 (codice ENEL n.521-87) al sostegno 100062 (codice ENEL n.521-84). In tutto 3 campate.
2. Il sostegno 100062 (codice ENEL n.521-84) di tipo 145 funge da transizione da doppia terna *split-phases* a semplice terna
3. Semplice terna dal sostegno 100062 (codice ENEL n.521-84) al sostegno 100071 (codice ENEL n.521-71). In tutto 9 campate.

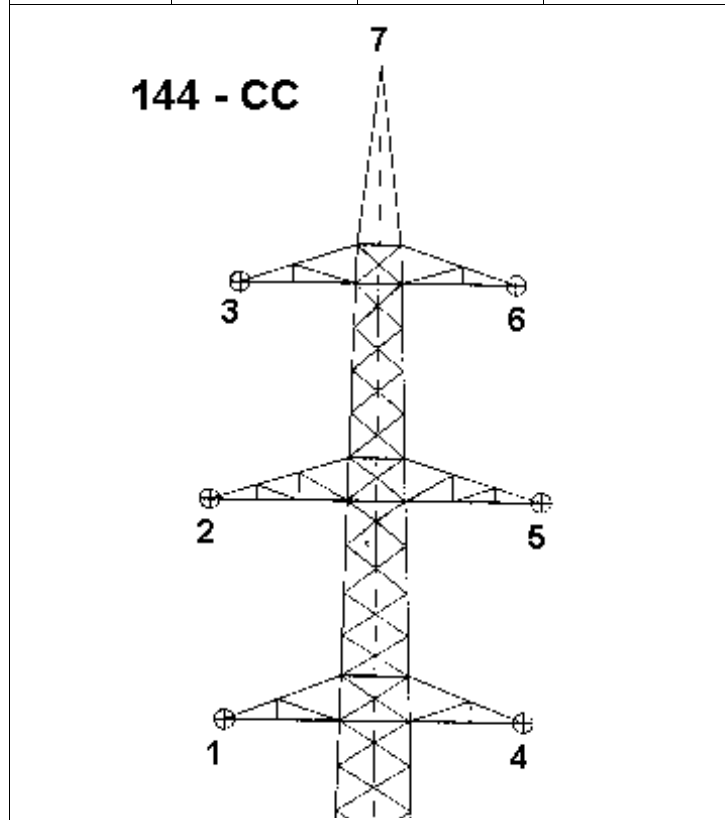
TABELLE DEI TIPI DI SOSTEGNI E DEI PUNTI DI SOSPENSIONE

ID_TIPO	N_PROG	POS_ORIZ	POS_VERT
136	1	-3.50	0.00
136	2	+3.00	2.00
136	3	-2.90	4.00
136	4	+0.00	7.25

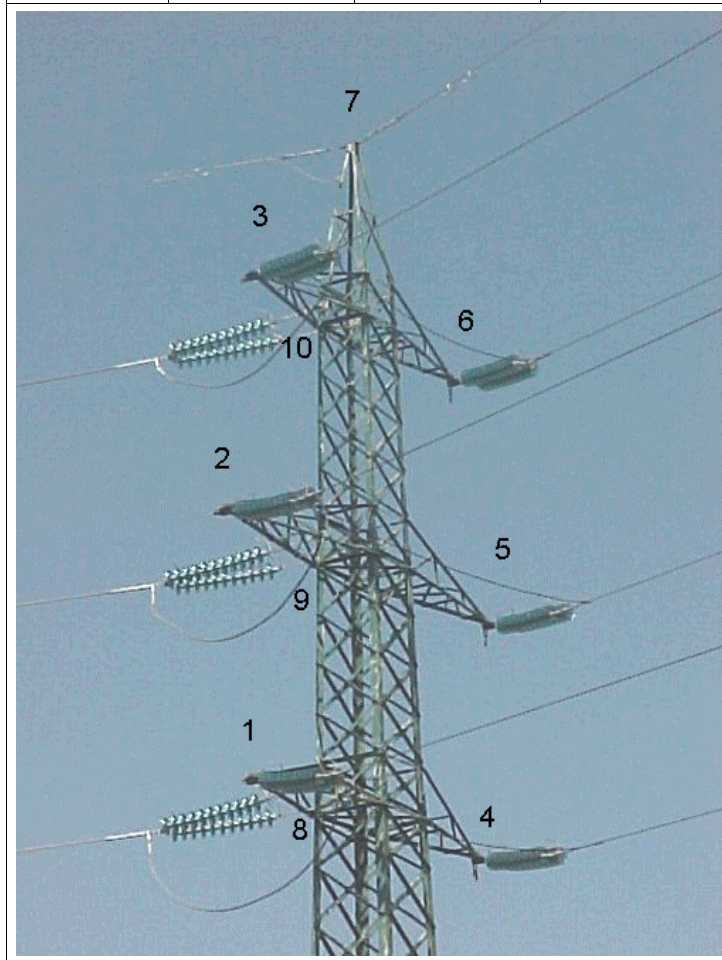


136 - NA

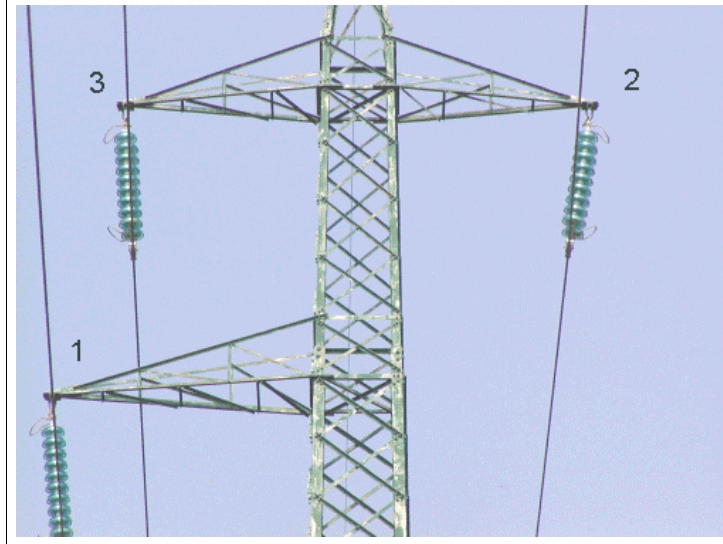
ID_TIPO	N_PROG	POS_ORIZ	POS_VERT
144	1	-3.10	0.00
144	2	-3.70	4.00
144	3	-2.90	8.00
144	4	+3.10	0.00
144	5	+3.70	4.00
144	6	+2.90	8.00
144	7	0.00	11.15



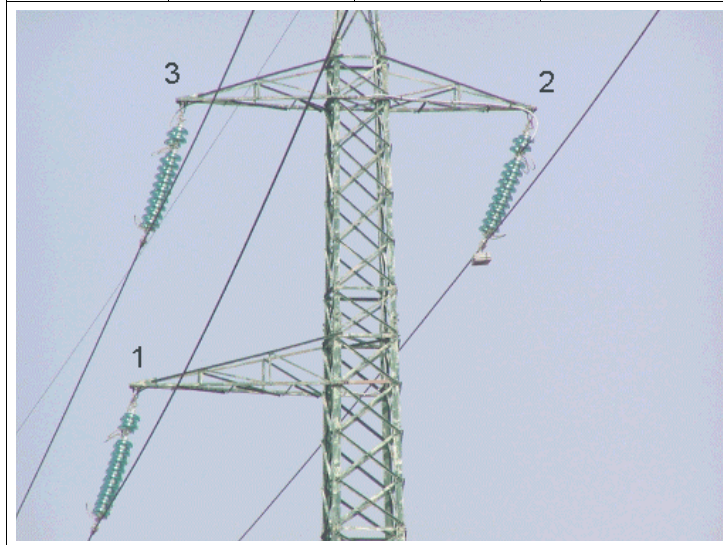
ID_TIPO	N_PROG	POS_ORIZ	POS_VERT
145	1	-3.10	0.00
145	2	-3.70	4.00
145	3	-2.90	8.00
145	4	+3.10	0.00
145	5	+3.70	4.00
145	6	+2.90	8.00
145	7	0.00	11.15
145	8	0.00	0.00
145	9	0.00	4.00
145	10	0.00	8.00



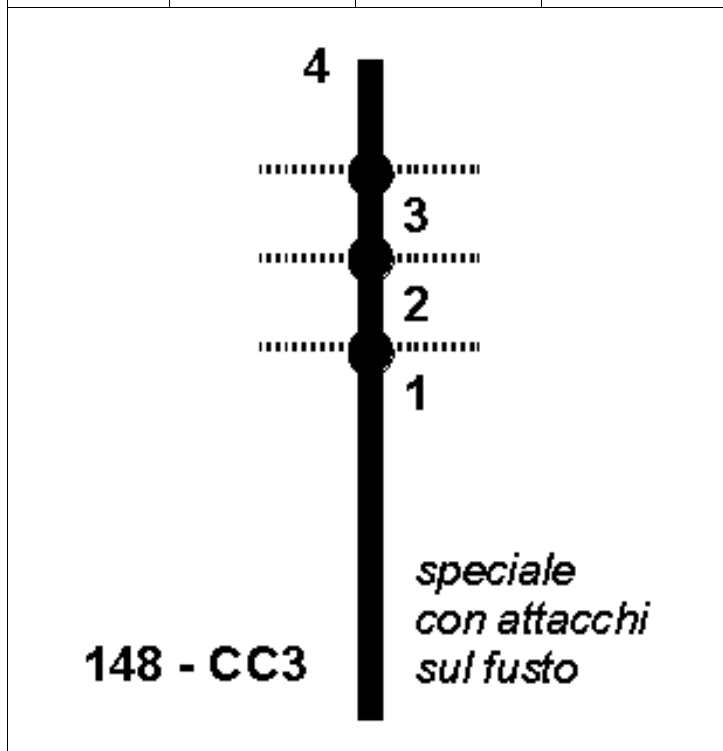
ID_TIPO	N_PROG	POS_ORIZ	POS_VERT
146	1	-3.70	0.00
146	2	+2.70	4.00
146	3	-2.70	4.00
146	4	0.00	7.15



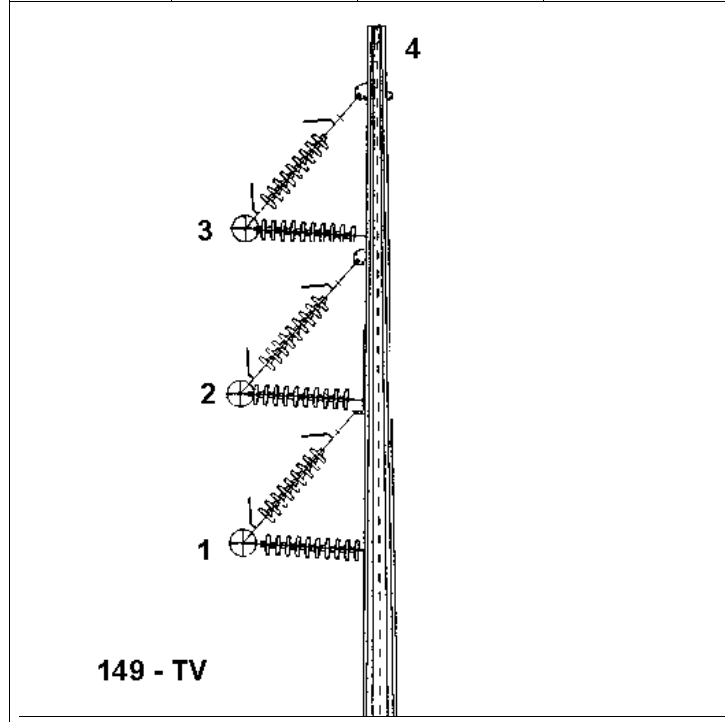
ID_TIPO	N_PROG	POS_ORIZ	POS_VERT
147	1	-3.70	0.00
147	2	+2.70	4.80
147	3	-2.70	4.80
147	4	0.00	7.95



ID_TIPO	N_PROG	POS_ORIZ	POS_VERT
148	1	0.00	0.00
148	2	0.00	4.00
148	3	0.00	8.00
148	4	0.00	11.00



ID_TIPO	N_PROG	POS_ORIZ	POS_VERT
149	1	-1.485	0.00
149	2	-1.485	3.50
149	3	-1.485	7.00
149	4	0.00	10.00



ID_TIPO	N_PROG	POS_ORIZ	POS_VERT
150	1	-4.20	0.00
150	2	-3.60	4.70
150	3	-3.00	9.40
150	4	0.00	14.60



ID_TIPO	N_PROG	POS_ORIZ	POS_VERT
151	1	-1.485	0.00
151	2	+1.485	2.25
151	3	-1.485	4.50
151	4	0.00	7.50

